

EML Consultants (Pvt) Ltd

Company Profile

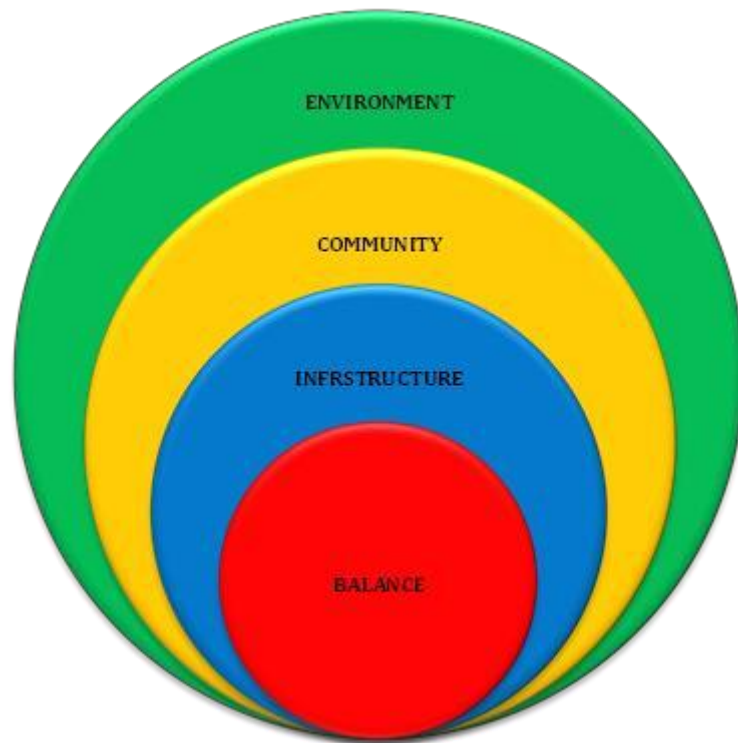


Together We Thrive

Consulting for Sustainable
Environments, Communities &
Development



6/10, Rajamahavihara Road
Pita Kotte, Sri Lanka
T: +94 11 5535880
F: +94 11 5535877/2854762
E: info@emlconsultants.com
W: www.emlconsultants.com



Our Vision

*To be the leading internationally recognized consultant in the region
supporting sustainable development*

Our Mission

*Efficient delivery of professional services adopting innovative
approaches and proactive strategies to provide value addition to the
client, locally and globally*

Corporate Information



Mr. Thilak Hewawasam
Chairman
Sri Lanka Administrative Service (SLAS)
MSc. Regional Development Planning,
UK



Mr. Avanthi Jayatilake
Managing Director
Sri Lanka Administrative Service (SLAS)
MSc. Environmental Management,
Australia



Dr. Manitha Weerasuriya
Director
PhD Environmental Biology
City University of New York
M.Phil. Biology (USA)
M.Phil. Botany (Sri Lanka)



Eng. P. C. Fernando
General Manager,
M.Sc. H.E. Delft, The Netherlands and Dip.
H.E. (Delft) in Hydraulic Engineering
BSc. Civil Engineering, University of Moratuwa



Mr. Jeyaraj Chandrasekara
Director
MBA University of Sunderland, UK
Post Graduate Diploma in Strategic
Management Member, Association of
Professional Bankers, Sri Lanka
Director of Pan Asia Banking
Corporation PLC, Sri Lanka

Head Office

6/10, Rajamahavihara Road,
Pita Kotte,
Sri Lanka
T: +94 11 5535880
F: +94 11 5535877/2854762
E: info@emlconsultants.com

Company Secretaries

Business Intelligence
Limited
No: 08 Tickell Road
Colombo 08
Sri Lanka

Auditor

Lakshman Rupasinghe & Co.
Chartered Accountants

Bankers

NDB Bank
Dharmapala Mawatha
Colombo 07
Sri Lanka

Hatton National Bank
No. 22 Edmonton Road
Kirulapone
Colombo 06
Sri Lanka

Bank of Ceylon
Regent Street Branch
Colombo 10
Sri Lanka

Our Associate Partners



Eng. Channa Fernando
Managing Director
Sustainable Engineering Concepts
M.Sc. H.E Delft, The Netherlands and Dip.
H.E. (Delft) in Hydraulic Engineering
BSc Civil Engineering, University of
Moratuwa



Dr. Manitha Weerasuriya
Managing Director
International Institute of Development Training
(Pvt.) Ltd
PhD Environmental Biology, City University of New
York
M.Phil Biology (USA)
M.Phil Botany (Sri Lanka)



Mr. Sudarshan Senaratne
Managing Director
Development Concepts (Pvt.) Ltd
Chartered Institute of Management
Accountants (CIMA) UK
BSc. University of Colombo, Sri Lanka



Ms. Shiranee Yasaratne
Managing Director/CEO
Sustainability Agenda (Pvt.) Ltd
M.Sc. Biochemistry, Molecular Biology and Gene
Technology Faculty of Medicine, University of
Colombo, Sri Lanka
B.Sc. (Hon) Zoology



Who We Are

EML Consultants (Pvt) Ltd, [EML], was incorporated in 1993 to provide technical and management consultancy services to the private and public sectors in Sri Lanka. Within a short time, EML emerged as a leading service provider covering a wide spectrum of services and has been successful in establishing collaborations with a number of international firms all over the world. Although, its initial scope of services was focused on environment and natural resources management, EML has been successful in expanding its services to a multitude of other areas to include: governance, human resources, institutional development, water supply and sanitation, community participatory planning, environmental engineering and financial management, and thus becoming the most versatile consulting firm in Sri Lanka.



EML's full time internal work force consists of technical experts with diversified academic backgrounds, a competent administrative and management unit including professional secretaries. EML has access to over 200 technical experts, covering all areas of expertise, and who could be mobilized within a short time. EML's spacious and modern Head Office is located at Pitakotte in the administrative capital of Sri Lanka, Sri Jayewardenepura, Kotte, an environmentally friendly area.



*Member of the National
Chamber of Commerce*

Our Team

Together We Thrive

Business Development Division

The Business Development Division handles the significant task of exploring potential sources for identifying opportunities for consultancy services, in order to obtain and pursue new business prospects. This process involves: tracking public notifications, close interactions with relevant international agencies, implementing agencies, and local and international associated partners.

One of the primary tasks handled by the Division is to prepare detailed technical proposals. This process involves: research/studies related to the project background, collection of relevant literature, feasibility study reports, environmental assessments and other data and statistics; and coordination with a multitude of technical experts and relevant departments within EML.

Project Management Division

The Project Management Division consists of four main areas of expertise namely, Environment and Natural Resources (ENR), Capacity Building and Human Resource Development (CBH), Urban and Industrial Engineering (UIE) and the Special Projects. A team of qualified and skilled project managers, project officers and technical and field officers handle the projects that are awarded to the company.

Both our in-house and external consultants work with this Division to ensure the timely delivery of quality and guarantee clients' satisfaction.



Administrative and Finance Division

It is responsible for financial and general administration of the EML. This Division extends the main support service to all four Associate Companies providing our teams with backbone to partake in their main tasks as we take care of the simple yet important tasks. This Division takes care of the following services: statutory payments, consultancy agreements, secretarial services, inward and outward correspondence, delivery and maintenance and staff welfare.



Environment and Natural Resource (ENR) Management

Dedicated to protecting and conserving the world's pristine environments

Our consultancies in the ENR projects range from conservation to environmental studies, to biotechnology and climate change. In house expertise allows us to provide services such as Environmental Impact Assessments (EIA's) and Initial Environmental Examinations (IEE's) for Development Projects.

Conducting comprehensive environmental impact assessments is one of our fortes. Our project managers and officers have a wealth of knowledge in fields such as environmental science, studies and management as well agriculture, conservation and geographic information systems. Experienced, both in house and in the field, these officers spend much of their time visiting project sites and working outdoors conducting field based research and assessments. We have over 200 highly qualified consultants who are experts in various fields that come together to produce quality work in collaboration with the ENR Team.

WHAT WE DO

Agriculture, Irrigation & Natural Resources Management

EML works extensively within the area of horticulture, and takes on projects in floriculture for beginners, as well as on-going projects which provide the technical knowledge and preparation of proposals for bank loans. Watershed management, river basin planning and coastal marine resource management and other areas of expertise are possessed by EML.

Environmental Reviews and Monitoring Reports

Our projects include environmental reviewing and monitoring of sensitive areas, ensuring continuous sustainability of a healthy ecosystem where an efficient use of resource is promoted. EML provides long term environmental monitoring and management services to both public and private sector clients.

Forestry and Wildlife Management

Our experience in projects in Biodiversity Conservation both within and outside protected areas helps us with designing an effective protected area network for the whole of Sri Lanka. We have developed the expertise of mapping for the study of biodiversity in seven selected protected areas, such as Bundale, Minneriya, Wasgamuwa etc.

CDM Project Development under C-trading

EML is the pioneer in Sri Lanka which offers this service, helping to formulate policies and frameworks for various CDM activities and contributing in assessing situations in relation to global warming.

GIS and Remote Sensing

EML proves its expertise in GIS with its extensive mapping of up-country plantations, the entire coastal belt of Sri Lanka, and its training classes. GIS skills have been used in our EIAs, IEEs, and City and Tourism Planning Projects to ensure we plan with the best geological precision.

Environmental Action Plans and Strategic Environmental Studies

Our ENR division has showcased its talents through the numerous EIA studies undertaken by the Division. We produce evaluations and recommendations for mitigation measures, to further prevent destruction of ecosystems.



Capacity Building and Human Resources Development (CBH) Programmes

Empowering individuals and communities to achieve independent growth

The CBH experts at EML offer a host of services aimed for economic growth and institutional development. The CBH division develops specific, measurable, and accountable strategies for the clients to meet the aims and objectives of the project.

EML offers many programs in training and human capacity building, facilitating the transfer of knowledge and dissemination of information. The training programs and workshops include social sector development, productivity improvements, organizational restructuring, and policy making and planning.

WHAT WE DO

Governance & Community Development

Good governance is necessary for all reforms, particularly the ones involving economic assistance via major lending organizations. EML thrives to meet this demand through its design and implementation programs, training on strategic planning, e-Governance, regional and local planning programs.

Monitoring, Evaluation & Surveys

EML uses monitoring, evaluation and surveys as a management tool which helps to determine how progress and impact will be assessed and will later explain the reasons for successes and failures. Socio-economic, base line surveys, situational analyses, needs assessment and feasibility studies are imperative to the project planning stage, as they provide new information regarding the project.

Micro-Finance & Enterprise Development

Micro financing has particular significance in the eradication of global poverty; EML is therefore, constantly involved in developing and implementing strategies/projects keeping this global demand in mind. Credit facilitation and preparation of project appraisal reports are some of the services we offer in this sector.



Urban and Industrial Engineering (UIE) Services

Strengthening and laying out the foundation for a sustainable future



The Urban and Industrial Engineering expertise in EML offers consultancy services in EIAs, IEEs, EAs, project feasibility studies, waste minimization, and waste/wastewater treatment. With the help of the internal and external expertise, EML can confidently execute the services whilst adhering to the client's aims and objectives. Our efficient, punctual staff is ready and willing to be at service for the betterment of the sustainable development while protecting the environment.

WHAT WE DO

Planning and Preparation

- Project identification/proposal preparation
- Feasibility studies/Master plans
- EIAs, IEEs, EAs
- Technical investigation, sampling, analyzing
- Waste audits (including Cleaner Production Audit)

Implementation (including technical supervision)

- Technical support for the implementation
- Project management
- Construction supervision
- Necessary technical training (human resource development)
- Workshops/seminar

Conceptual & Detail Designs

- Engineering related conceptual & detail designs
- Preparation of tender documents
- Review of designs
- Evaluation of tenders

Monitoring & Evaluation

- Performance Evaluation and Management
- Follow-up and Coaching
- Documentation and Dissemination
- Impact Monitoring and Analysis



Special Projects Management

Merging expertise from a host of areas to execute multifaceted projects

The special project management capacity of EML brings together teams that represent the ENR, CBH and UIE divisions as well as experts from other areas to implement projects that require different subject areas and expertise

Water and Sanitation Projects

- Greater Colombo Wastewater Management Project- Design Supervision and Management Consultant (DSC), feasibility and detailed designs - In association with SMEC of Australia.
- Technical Study of Water and Sanitation Service Delivery in the Plantation Estates- The World Bank.
- Ratmalana/Moratuwa – JaEla/ Ekala Sewerage and Wastewater System- in Association with SWECO Sweden.
- Small Towns & Rural Arid Areas Water Supply and Sanitation Project -in Association with Nippon Koei, UK.
- Basic Social Infrastructure Development Project-In Association with IPE GLOBAL of India
- Environment Assessment for the Proposed Septage Treatment Facilities at Mullaitivu and Kilinochchi Districts under WSSIP Water Supply and Sanitation Improvement Project
- Environment Assessment for the proposed Septage Treatment Facilities at Mullaitivu and Kilinochchi Districts under WSSIP – Water Supply and Sanitation Project
- Environmental Impact Assessment Report for the Proposed Waste to Energy Project in Mahara/Dompe

Integrated Waste Management

- Environmental Restoration Project Ampara
- North East Coastal Community Development Project - (NECCDEP) Solid Waste Management for Batticaloa Municipal Council
- Improving Urban Services in Sri Jayawardenepura-KotteMunicipality
- Studies on Solid Waste Composition, analysis and Management Process of Local Authorities in Hikkaduwa. Under SCOTIA –
- Colombo Municipal Solid Waste Management Project – Burns Environmental Technologies (Pvt) Ltd
- Metro Colombo Urban Development Project- Ministry of Defence and Urban Development.

Institutional Development and Governance

- Greater Colombo Wastewater Management Project – Institutional Development Consultancy (IDC)
- Local Governance Assessment
- Supporting Regional Governance Project (SuRG)
- Metro Rail Feasibility Study



Projects Awarded in Environment and Natural Resource Management (ENR)

ENR	
Preparation of the Project Completion Report of Forest Resources Management Project	Forest Resources Management Project Ministry of Environment
Consultancy services for Detailed Biodiversity Study for the Implementation of the Following Conditions in the Kaluganga EIA Approval	Mahaweli Authority of Sri Lanka
Initial Environmental Examination Report (IEE) - Rehabilitation of Internal Roads of Estates - 2008 Programme	Elpitiya Plantation PLC
Consultancy Assistance to the Ministry in Developing a Project Document on Climate Change and CDM	The Royal Norwegian Embassy
Consultancy Service for the Assignment of the Initial Environmental Examination (IEE) for the Construction of Low Flow Weir Across Deduru Oya at Viharagama Water Intake and Treatment Plant of Chilaw Water Supply and Sanitation Project	National Water Supply and Drainage Board
Research Proposal on Climate Change - Mapping and establish an inventory within the vulnerable area	Ministry of Environment and Natural Resources
Research Proposal on Climate Change - Establish the solar radiation potential in tea processing factories	Ministry of Environment and Natural Resources
Initial Environmental Examination Report (IEE) - Rehabilitation of Internal Roads of Estates - 2008 Programme	Kelani Valey Plantations Limited
Consultancy Services for Preparation of an Initial Environmental Examination (IEE) Report for a Resettlement Project in Anuradhapura	National Physical Planning Department
Evaluating the State of Source Separation in Solid Waste Management Practices in the Western Province and Testing the Efficacy of Applying three of More Practices in Nine or More Trials	LIRNEasia
NECCDEP - Study 19: A Review of the Historical and Current Status of the Fisheries Sector along the Eastern Coast of Sri Lanka	North East coastal Community Development
Technical Report on Electronic and Electrical Waste Management	Central Environmental Authority
Environmental Impact Assessment (EIA) Study of the Proposed Tourist Hotel Project at Uppuveli, Trincomalee	River View Palm Hotel (Pvt.) Ltd
Post Biodiversity Assessment in the Project area of Upper Kotmale Hydropower Project	Ceylon Electricity Board
Environmental Impact Assessment (EIA) for Waste to Energy Project at Meethotamulla	Western Power Co. Ltd

ANR	
Proposed Dendro Project - Gliricidiya Plantation Pathaha (1000 acres) Walmeethalawa, Haldumulla	United Dendro Energy (Pvt) Ltd,
Conducting an Environmental Assessment Study for Development of Kirillagahawatte Fish Landing Centre in Katunayake	The Food and Agriculture Organization of the United Nations (FAO)
EIA Study of the Proposed 151 Rooms 4 Star Resort at Waskaduwa	Citrus Leisure PLC,
Environmental Impact Assessment (EIA) - Beragala Eco Golf Resort	Alpha & Omega Developers (Private) Limited
Proposed Waste to Energy Project at Meethotamulla	Western Power
Review of the Water Quality of Bolgoda Lake, Thalangama Lake and Bentota Ganga and Surrounding Environment	Central Environmental Authority
Preparing Mangrove Management Plans for Mangrove areas associated with Negombo, Chilaw and Puttalam Lagoons	The Food and Agriculture Organization of the United Nations (FAO)
Environment Assessment for the Proposed Septage Treatment Facilities at Mullaitivu and Kilinochchi Districts under WSSIP Water Supply and Sanitation Improvement Project	Ministry of City Planning & Water Supply
Development of Provincial Invasive Alien Species Profile to Identify the Status of Distribution, Threats and Management Measures	United Nations Development Programme (UNDP)
Environmental Impact Assessment Report for the Proposed Waste to Energy Project in Mahara/Dompe	Urban Development KCHT Lanka Jang (Pvt) Ltd
Environment Assessment for the Proposed Septage Treatment Facilities at Mullaitivu and Kilinochchi Districts under WSSIP	Water Supply and Sanitation Improvement Project Ministry of City Planning & Water Supply
IEE for the 80 roomed Maalu Maalu Resort and Spa - Kalpitiya	Connaissance de Ceylon (Pvt) Ltd.
Post Biodiversity Assessment in the Project area of Upper Kotmale Hydropower Project	Ceylon Electricity Board



Projects Awarded in Capacity Building and Human Resources Development (CBH)

CBH	
Preparation of the application to NORAD	Plantation Development & Management (Pvt) Ltd
Consultancy services for Evaluation of Skill Development Fund Utilization and providing services to skill development and employment in communities	Gemidiriya Foundation
Micro and Small Enterprise Development for Pro-Poor Growth in Sri Lanka - Case Study Entrepreneurship Studies	The International Labour Office
Micro and Small Enterprise Development for Pro-Poor Growth in Sri Lanka - Intervention Report Good Working Practices in Sri Lanka	The International Labour Office
The Evaluation of Water and Sanitation in Settlements in Eastern Region of Sri Lanka	Water and Sanitation in Eastern Sri Lanka (WASSER)
Consultancy Assignment to Carry out Impact Assessment Study	Ministry of Plantation Industries
The Present Condition Survey of Night Soil Treatment at Local Authorities in Sri Lanka	Kokusai Kogyo Co., Ltd
Design and Implementation of Participatory Planning Methodologies Training Workshop for Local Authority Staff, Sri Lanka	ARD Inc
NECCDEP - Study 14: An Analysis of the Current and Future Economic Value of Coastal Resources in the Eastern Province of Sri Lanka	North East Coastal Community Development Project (NECCDEP)
Consultancy Services for Evaluation of Water Safety Training Project in Gampaha District of Sri Lanka	Sri Lanka Red Cross Society
Final Evaluation - Post Tsunami Rehabilitation and Development Program, Ampara of Sri Lanka	CARE International Sri Lanka
Study for Information Update on Rural Development and Poverty Reduction Projects and Programs in Sri Lanka	JICA (Japan International Cooperation Agency)

CBH	
Study on the Public Service to Vulnerable Population in the North	Japan International Cooperation Agency
Consultancy services for evaluation of water sanitation / hygiene promotion projects in Matara and Ampara and water treatment plant for nurses teaching school in Ampara	International Federation of Red Cross and Red Crescent Societies
Re-Awakening Project, Consultancy Services for Cluster Proposal Development	Ministry of Economic Development
Capacity Building, Design of the Fiscal Transfer Mechanism and identify proposed WASH Planning needs for Ambagamuwa, Nuwara Eliya and Walapona	World Vision Lanka
Consultancy services for evaluation of two HID Projects funded by the Japanese Red Cross	Sri Lanka Red Cross Society,
Mid-term external evaluation for the project "Socio Economic Empowerment of Conflict Affected Communities in the Northern and Eastern Provinces of Sri Lanka" (ACAP) covering Vavuniya, Mannar, Trincomalee and Batticaloa Districts	ACTED Sri Lanka Country Office,
Poverty & Social Assessment Survey Feasibility study detailed engineering design south way project	Express way - RDA/KCHT
Sectoral Study to operationalize the Eastern Development Plan	Japan International Cooperation Agency (JICA)
Capacity Needs Assessment of Pradeshiya Sabhas in the Eastern Province	United Nation Development Program (UNDP)
Greater Colombo Wastewater Management Project - Institutional Development Consultancy (IIDC)	Ministry of Local Government and Provincial Councils, Government of Sri Lanka



Projects Awarded in Urban and Industrial Engineering (UIE)

UIE	
Study on Capacity Assessment in the provincial Department of Irrigation of the Eastern Province	Japan International Cooperation (JICA)
Detailed Design for Kotalahana School Water and Sanitation Facilities	World Vision Lanka
Strategic Environmental Assessment of the Cauvery Basin	Petroleum Resources Development Secretariat
Feasibility Study and EA for Three Fishery Harbours in Sri Lanka	NIRAS- Denmark
Hydrological Study to assess 100 year Flood Level at Yan Oya Estuary, Kallaarawa, Trincomalee	Pathfinder Private Limited (PPL), 300, Galle Road, Colombo 03
Consultancy Services for Architectural & Structural Designs including services for the Dutch Bay Resort Development Project - Phase I	Dutch Bay Resorts (Private) Limited
Hiring of Consultant to Provide Technical Advices and Project Management Supports through Supply of Human and Other Related Resources for the Rehabilitation of Minor Irrigation Schemes in BATTICALOA District	Re-awakening Project
Preparation of Project Proposal to Mawanella Rubber Factory Bid Document	Kotagala Plantations Limited
Report preparation and editing tasks	Population Services Lanka
Consultancy Services for Preparation of Master Plan for Land Use in Cochin Fisheries Harbour	Mir Projects and Consultants Private Limited-India

Local Government Enhancement Sector Project – Design and Supervision Consultancy for Southern Province	Ministry of Local Government and Provincial Councils
Local Government Enhancement Sector Project – Design and Supervision Consultancy for Western Province	Ministry of Local Government and Provincial Councils
Metro Colombo Urban Development Project – Infrastructure Development in Kolonnawa Urban Council	MCUDP (Ministry of Defence and Urban Development)
Metro Colombo Urban Development Project – Infrastructure Development in Sri Jayawardenapura-Kotte MC	MCUDP (Ministry of Defence and Urban Development)
Greater Colombo Wastewater Management Project – Institutional Development Consultancy (IDC)	Ministry of Local Government and Provincial Councils, Government of Sri Lanka
Design Consultants for the Development of Fishery Anchorage Facility by Providing a Jetty at Kapparatota	PIMU, Ministry of Fisheries & Aquatic Resources
Design & Construction Supervision for the Development of Jetty Facility at Pasikudha	Ministry of Fisheries & Aquatic Resources Development

UIE	
Developing a Technical Case Study on the Pilot Solid Waste Management Implemented by the Ambalangoda Urban Council under the Local Economic Governance (LEG) Project	The Asia Foundation
Consultancy Services for Improving the Water Recycling Process, Management of Sludge and Oil Waste Generation at "PLC Auto Care" located at NO.81, Old Kesbewa Road, Boralasgamuwa	Peoples Leasing Company Limited
Conduct Flood Mitigation in Ampara and Batticaloa Districts of Sri Lanka	United Nations Development Programme (UNDP)
Consultancy Services for Pre-Feasibility Study of the Proposed Waste to Energy Plant at Muthurajawela, Sri Lanka	ORIZON Renewable Energy
NECCDEP - Study 13: An Assessment and Critical Evaluation of the Potential Pollution Impact of Current Landuse Practices on Batticaloa District	North East coastal Community Development Project (NECCDEP)

SPC	
Carrying out Independent ex-post Procurement Audit of the Procurement Carried out by the ICTA	Information & Communication Agency of Sri Lanka
EML Smart Media Carbon Footprint-Commercial Bank	Smart Media

SPC	
Greater Colombo Wastewater Management Project	Sinclair Knight Merz PTY LTD-Australia
Labour Laws, the Business Environment and the Growth of MSEs in South Asia	The International Labour Office
Consultancy services to EC/ECO	Tripple Line Consulting-United Kingdom



Our Clients



International Project Partners



On Our Way Forward

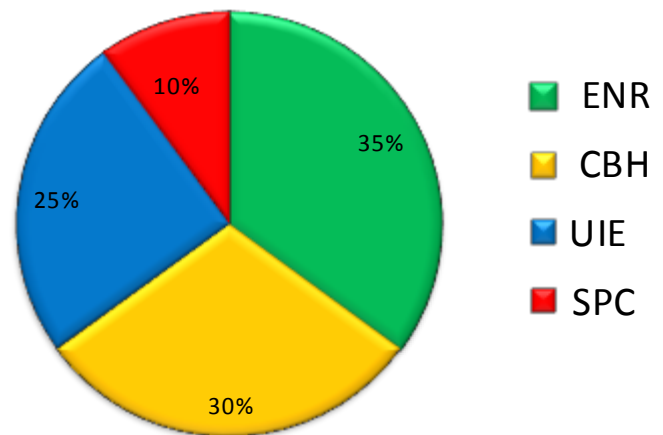
EML has progressed from a small company of four employees in 1993 to being the Island's most sought after environmental consulting company in Sri Lanka. Currently, it has more than 100 staff members in its management and project portfolio. Spreading our wings, we have diversified in to many fields and established a host of sister companies and spread our consultancies overseas as far as Australia and the United Kingdom.

Our base of experienced and qualified consultants from diverse backgrounds keeps increasing each day, further strengthening our capacity. We have and continue to maintain excellent working relationships with our clients, who entrust in us at any time they require the services we offer.

We endeavor to further improve the quality and standard of our services as we step in to the future, where environmental concerns have taken the forefront and sustainable development has become the key concept of global development.

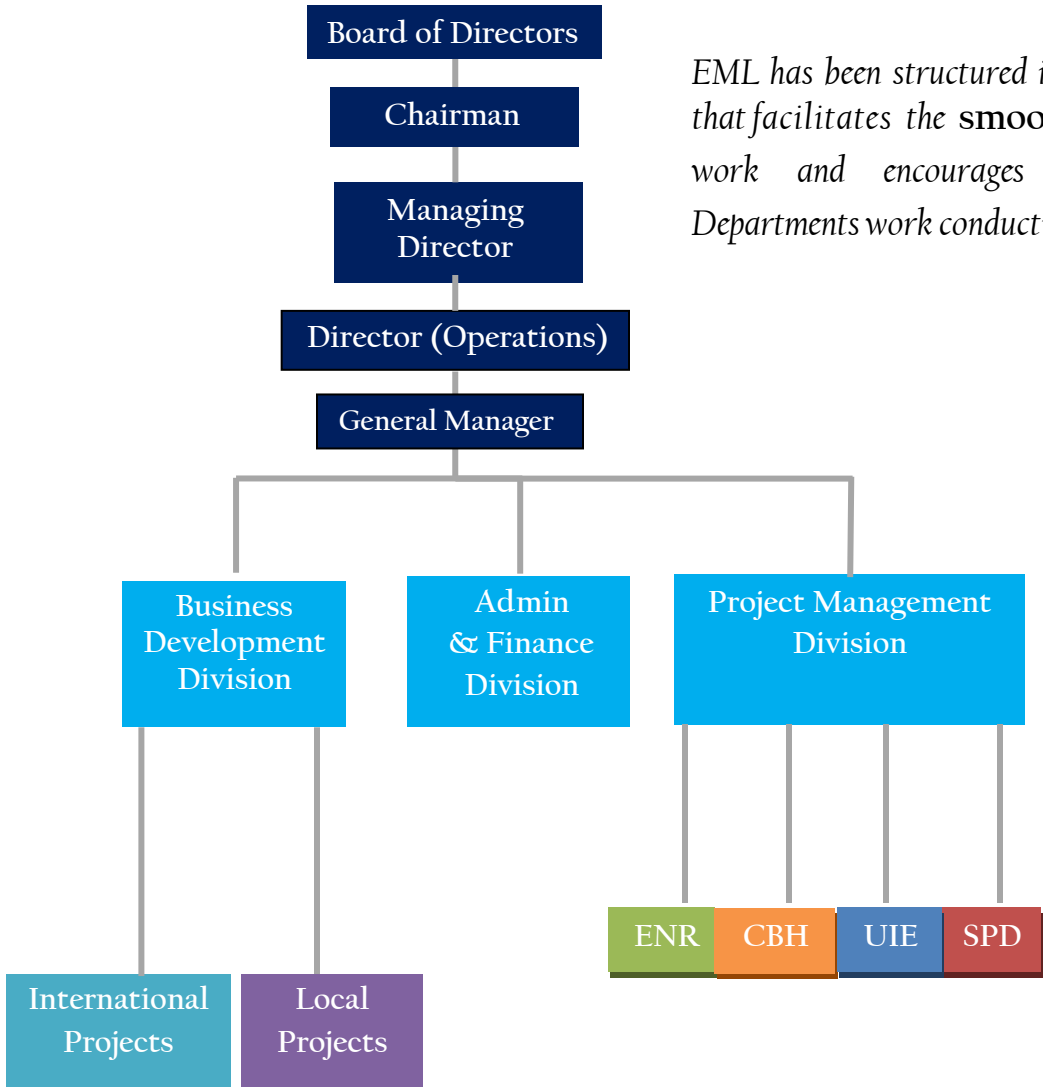


Percentage of Projects Won By Sector 2010-2015



We are dedicated to ensuring that the Earth's Environments and communities sustain in the future.

Company Structure



EML has been structured in a manner that facilitates the smooth flow of work and encourages that all Departments work conductively

The EML Associated Partners

EML, since its inception, has ventured into many areas and far afield, and in this endeavour, it has succeeded in establishing strong working alliances with four associated firms, namely, Development Concepts (Pvt.) Ltd. (DC) International Institute of Development Training (Pvt.) Ltd. (IIDT), Sustainable Engineering Concepts (SEC), and Sustainability Agenda (Pvt.) Ltd. (SAPL), who have been functioning independently, excelling within their own specialized areas. EML has now taken a step further and created a strong partnership with our associated firms, under which resource mobilization would be more efficient and cost-effective, and the quality of our services would be assured through shared values and collective actions. This coherent cohesive team ensures a quality and timely solution at all times to our clients.

Development Concepts (Pvt) Ltd (DC), is a leading management consultancy firm involved in providing financial and business management consultancy services to the private and public sector organizations, both locally and internationally.



International Institute for Development Training (Pvt) Ltd, (IIDT) is leading development training, consultancy services, business development and social research providing company. Our services include training and capacity building in the areas of business governance, social development, environment, natural resource management, sustainable development etc.



Sustainable Engineering Concepts (Pvt) Ltd, (SEC) was formed in January 2012 with the intention of fulfilling the need of offering professional consultancy services for sustainable innovative engineering solutions for development. It has also been successful in providing services as a viable local firm engaging the services of local professionals in implementation of internationally funded large local infrastructure projects by forming strategic associations with international consultancy firms. Within a short period upon its formulation, it has been successful in securing number of infrastructure projects in road and water supply sectors.



Sustainability Agenda (Pvt) Ltd, (SAPL) is a sister company of the EML Group and has been established to engage the private sector to profit from business solutions based on development approaches that integrates effectively with the concept of the triple bottom line – “People, Planet Profit”. SAPL offer expertise to companies in achieving sustainability solutions; to actively learn, obtain technical support, knowledge and experience in promoting and linking with global best practices in the areas of natural resources management, environment and biodiversity conservation both nationally and internationally.

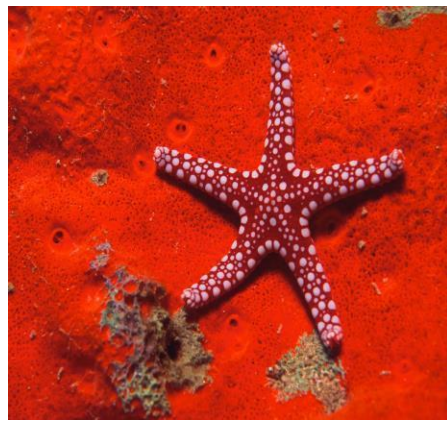


Our Strategic Partners

Zenith BPO (Pvt) Ltd is a competent Business Process Outsourcing (BPO) organization, bringing together the knowledge and operations expertise of varied industry specialists, to offer high quality and reliable services. We offer consultancy and operations services that help our clients improve functionality and stay ahead in their respective industry markets.







6/10, Rajamahavihara Road,
Pita Kotte, Sri Lanka
T: +94 11 5535880
F: +94 11 5535877/2854762
E: info@emlconsultants.com
W: www.emlconsultants.com